

CLIMATE CHANGES, IMPACTS & IMPLICATIONS FOR NEW ZEALAND



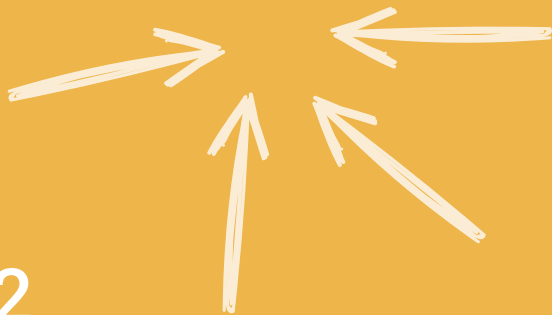
Anthropogenic climate change poses critical challenges for New Zealand's environment, economy and society.

The CCII programme undertook targeted research on climatic conditions, impacts and implications for New Zealand up to 2100, through five inter-related Research Aims (RAs):



RA1

Improving climate projections.



RA2

Identifying pressure points, critical steps and potential responses.



RA3

Identifying feedbacks, understanding cumulative impacts & recognising limits.



RA4

Enhancing capacity and increasing coordination to support decision-making.



RA5

Exploring options for New Zealand under different global climates.